



*Always*  
Were

# Synopsis

*Always Were* explores the nuanced evolution of a relationship between Julia, an aging model struggling with her isolation and depression, and her daughter Sydney as she navigates the same challenges through her adolescence. Our film is a visual and emotional exploration of familial bonds, introspection, and the delicate dance between the seen and unseen.

A misty, atmospheric scene of a path lined with trees and a street lamp at dawn or dusk. The path is shrouded in a thick layer of white mist, and the trees are silhouetted against a soft, golden light in the sky. A street lamp is visible on the left side of the path.

# Production Specs

Shooting Dates: May 28th - 31st, 2024

Projected Budget: \$32,000

Logline: While preparing for a birthday party, a mother and daughter's relationship gradually changes as they struggle through the shared loneliness and melancholy of their lives.

# Noah Griffin - Writer/Director

is from Louisville, Kentucky. A graduate of Western Kentucky University's Film program, he's long had a passion for creating immersive environments and guiding a viewer from a purely sensorial perspective. Noah's most recent work as a writer and director includes *If the Trees Heard Us* (2023), *The Silence Between* (2022), and *Everlasting* (2021).





# Ben Goodman - Dir. of Photography

is an American cinematographer and director. He was born on May 3, 1990, in Ridgewood, New Jersey. He is a graduate of Emerson College in Boston, Massachusetts, where he studied film production with an emphasis on cinematography. He lives in Los Angeles, California, and is represented by Murtha Skouras Agency.

# Katherine Frantz - Production Designer

is a production designer from Taylor Mill, Kentucky. She is a graduate of Western Kentucky University's film program. Her previous design credits include *If the Trees Heard Us* (Griffin, 2023), and *Vices* (R. Coomes, 2022). Katherine loves exploring nature and all of the small details that go into designing a film.



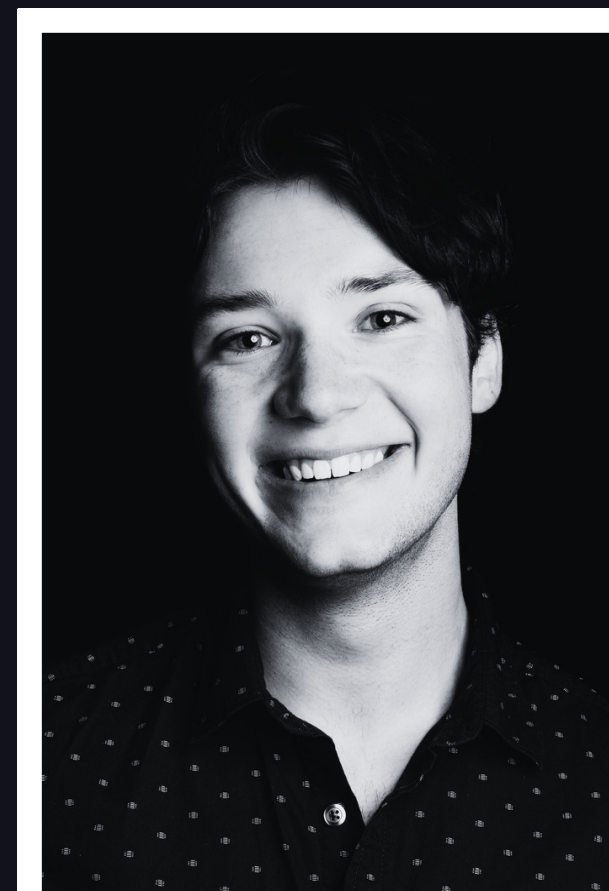


# Chris Lambert - Editor

Chris Lambert is an editor and multi-disciplined filmmaker that seeks to help create and tell unique stories in effective, impactful ways. He has worked on numerous advertisements, animated projects, short films, and non-narrative content, and with over 7 years of filmmaking experience, he is eager to delve deep into any project that comes his way.

# WTWS PRODUCTIONS

is a dynamic collective of filmmakers united by a shared passion for storytelling and innovation. Our latest venture marks our third collaboration with director Noah Griffin. With each project, we strive to push artistic boundaries and challenge conventional narratives, garnering recognition at esteemed festivals such as the Louisville Short Film Slam and SKY Arts Film Festival. Together, we strive to infuse our work with fresh, diverse perspectives and creative energy, ensuring that our films captivate audiences and spark meaningful conversations.





*There comes a time in anyone's life when a kind of transference takes place in the relationship between parent and child. Like the flip of a switch or the emulsion of a photograph, we abruptly see our parents in new ways, realizing they existed before we did, thought thoughts and lived lives entirely separate from our own. Almost always, it's a flower of understanding that blossoms into a flood of impossible questions and knotty, uncertain feelings. Always Were seeks to be that moment, to capture that deeply intimate process. The one where parent and child both come together yet remain at a ghostly distance.*

*from the director*

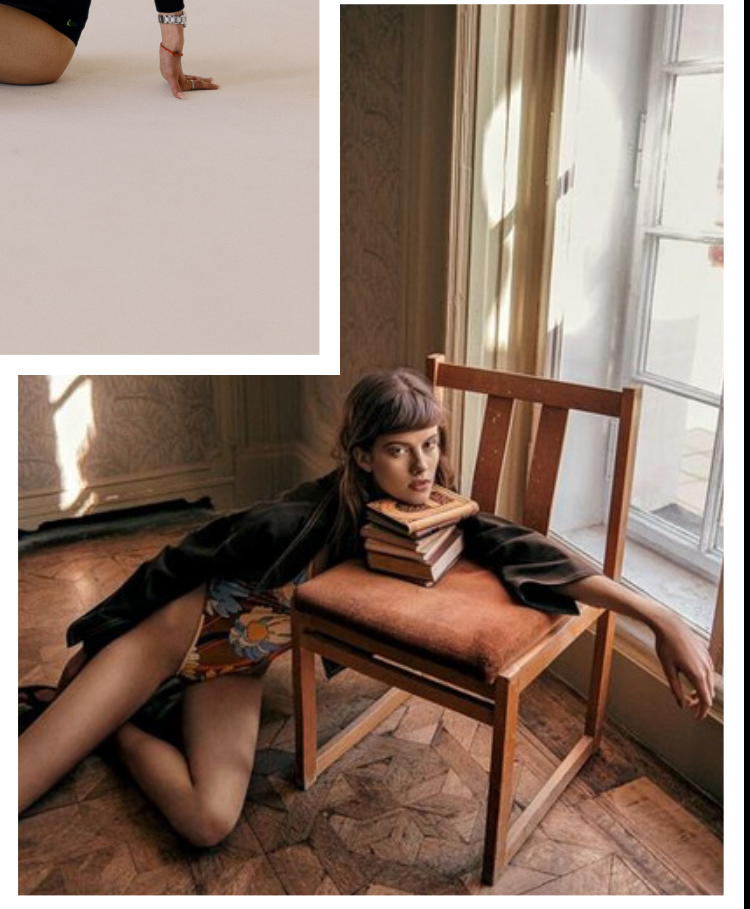
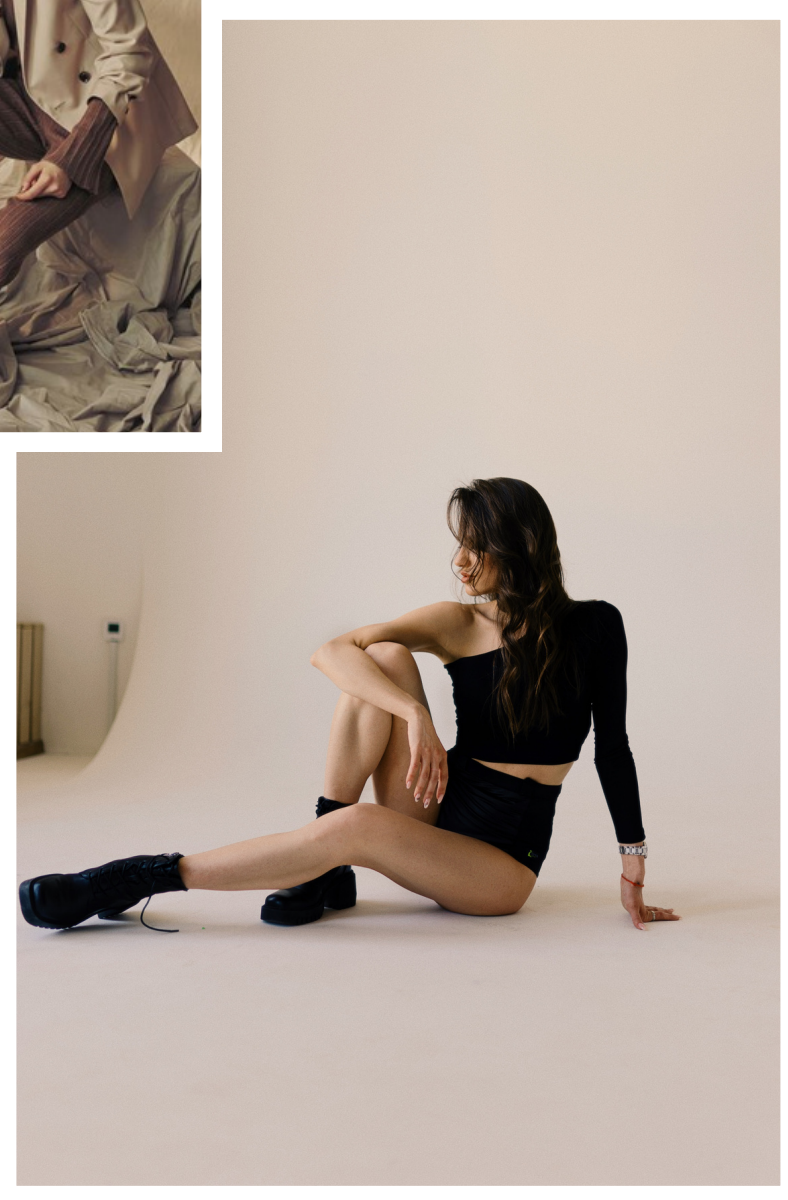
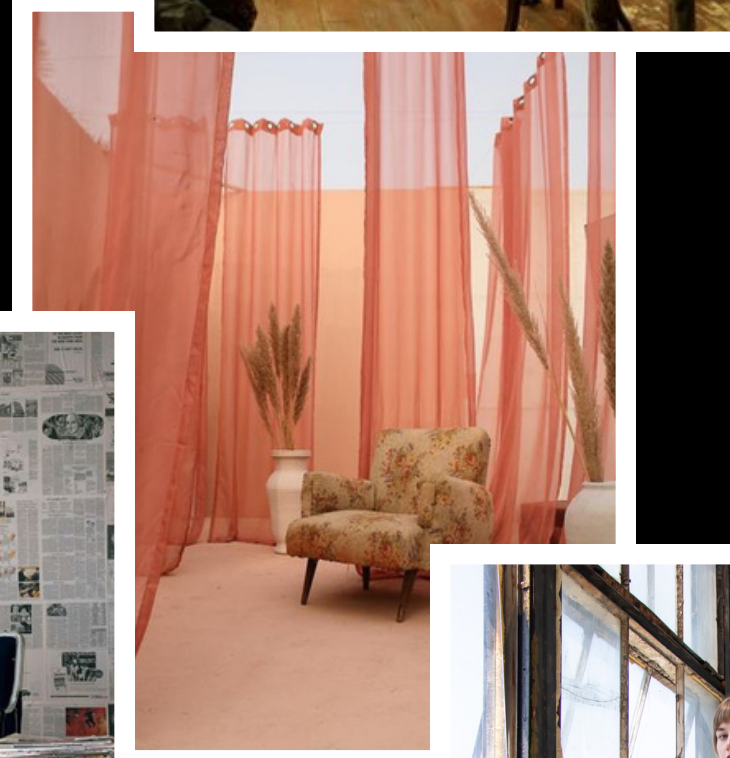
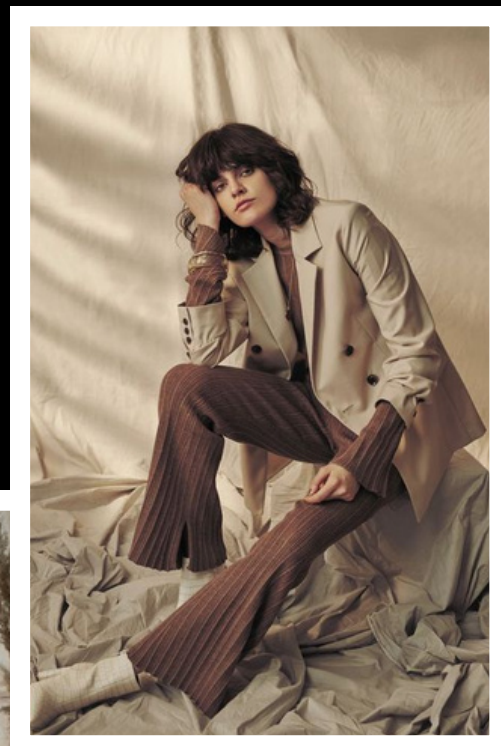


# Cinematography



A woman in a light blue shirt is sitting in a red upholstered chair, reading a book. She is positioned in the foreground, slightly to the right of the center. In the background, another woman is sitting in a similar chair, also reading a book. The room is dimly lit, with light coming from a large window behind the women. The window shows a view of a tree and a building. The floor is made of light-colored tiles. The overall atmosphere is quiet and studious.

# Production Design





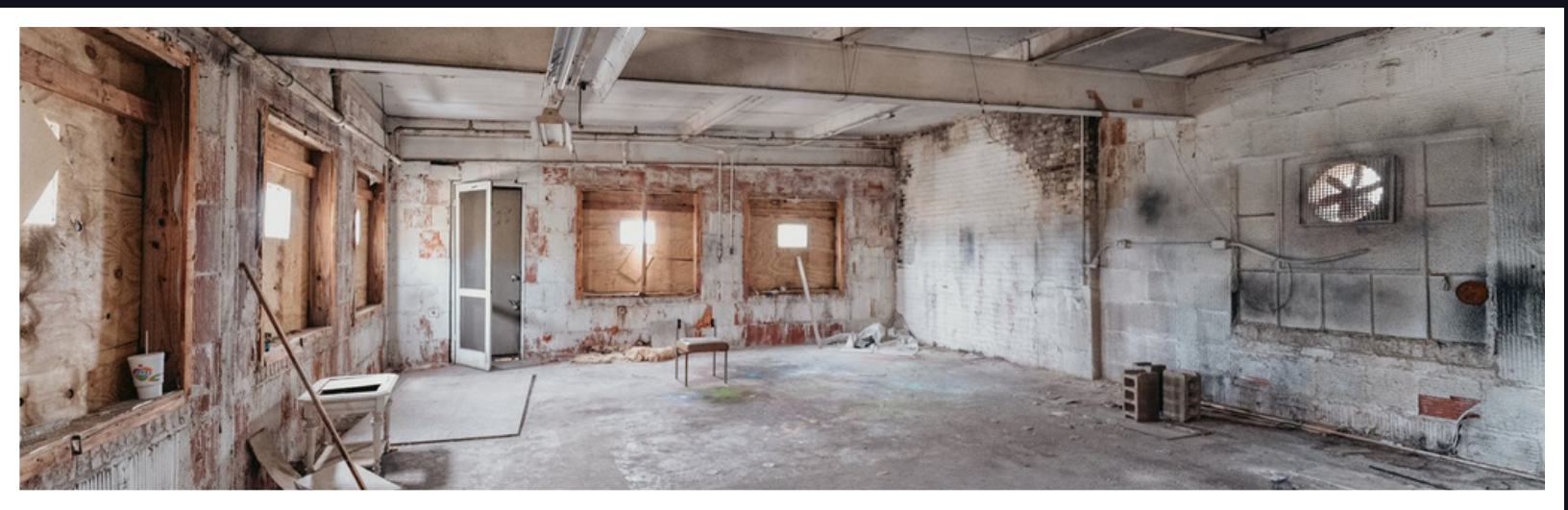
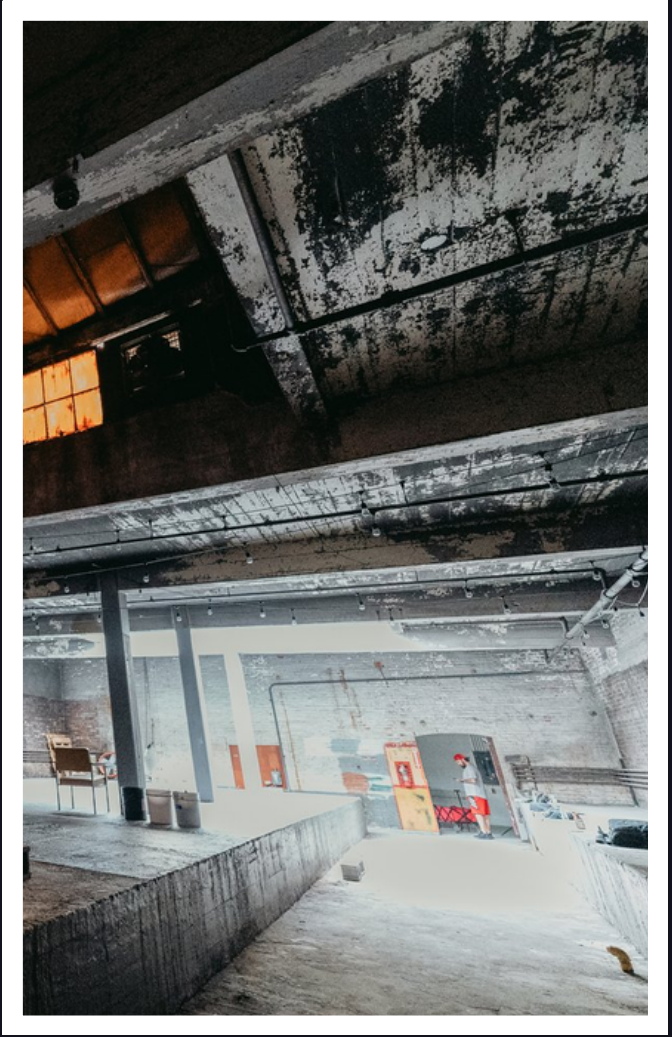
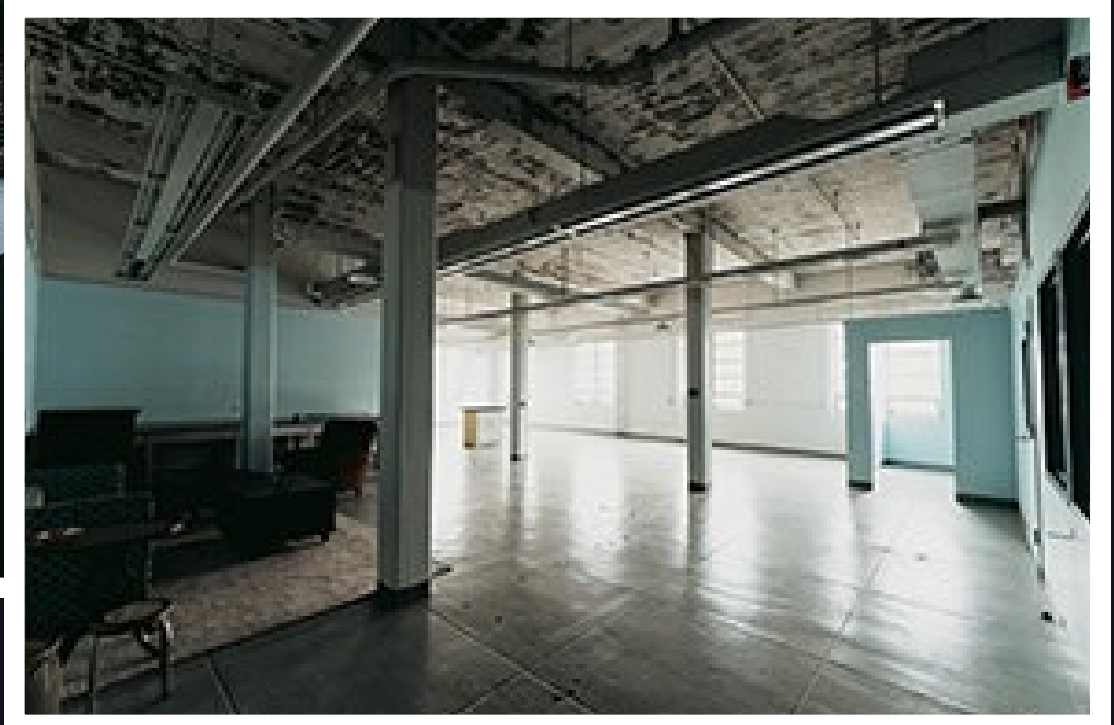


**Location 1 - *interiors***  
**Home in Morrow, OH**



**Location 2 - *exteriors***  
**Home in Louisville, KY**





**Location 3 - *photo shoot*  
Studio in Louisville, KY**



# Sample Work

# *If the Trees Heard Us*

is the recipient of the 2023 Louisville Short Film Slam Jury Award and was selected for the Sky Arts Film Festival. The film follows an estranged brother and sister as they journey across a vast landscape in search of their childhood home.

Website: [christianstraubfilm.com/if-the-trees-heard-us](http://christianstraubfilm.com/if-the-trees-heard-us)

Instagram: [@ifthetreesheardus](https://www.instagram.com/ifthetreesheardus)

Link: [vimeo.com/821441400](https://vimeo.com/821441400)

Password: TREES23



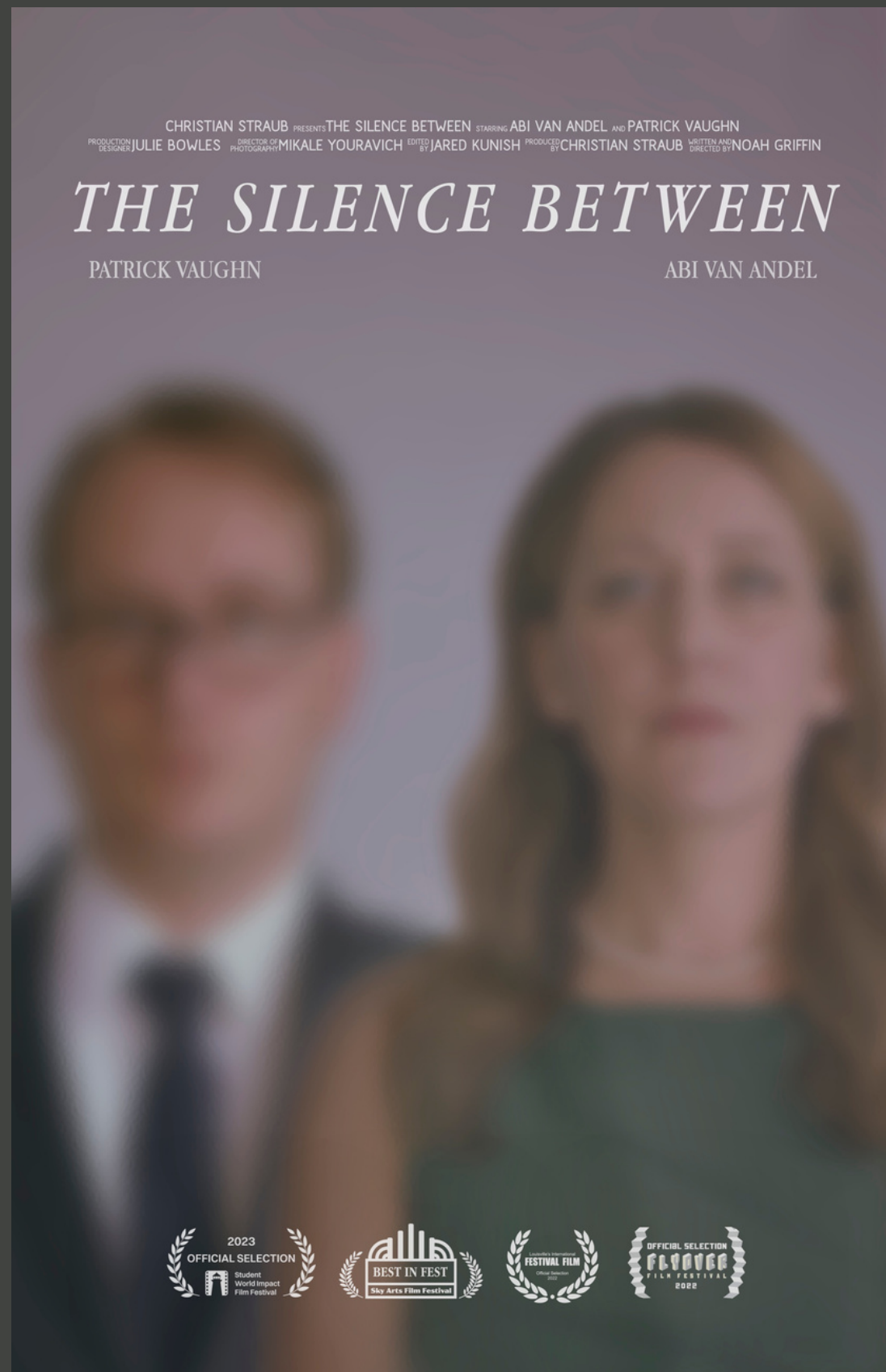
# *The Silence Between*

follows a desponding couple as they move out of their home, recollecting on their individual perceptions of their crumbling relationship. Filmed at the historic Frost House in Michigan City, Indiana, this was the first independent project from our team of young filmmakers. The film went on to win 'best in fest' at the inaugural SKY Arts Film Festival in 2022.

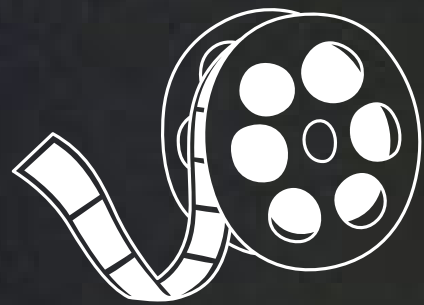
Website: [christianstraubfilm.com/the-silence-between](http://christianstraubfilm.com/the-silence-between)

Instagram: [@thesilencebetween\\_film](https://www.instagram.com/thesilencebetween_film)

Vimeo Link: [vimeo.com/821698161](https://vimeo.com/821698161)



# Top Expenses



\$2,500  
35mm Film Stock  
and Processing



\$1,500  
Craft Services  
and Lunch for Cast & Crew



\$2,000  
Costumes, Props, Sets,  
Makeup and Hair



\$2,500  
Lodging and Transportation  
for our Equipment & Crew

# Contact Us

Christian Straub, Producer  
cstraub.film@gmail.com  
513.544.6775

Noah Griffin, Director  
nngriff40@gmail.com  
502.396.8898

A person with long dark hair, wearing a dark leather jacket and dark pants, is kneeling on a wooden floor in a dimly lit room. They are positioned next to a dark suitcase that is open, with a hat and other items visible inside. The room contains a bed with a patterned blanket, a lamp with a white shade, and a chair. Large windows in the background let in some light. The overall mood is somber and reflective.

# Always Were